

Multiple electrohydraulic controls type MC

on-off & proportionals

1 MODEL CODE

***** MC H - V / 3E - 2Z / AL 12 DC

Design number

MC = Multiple control

Valve size (ISO 4401):
H = 06
K = 10

Options:
F = for fixed displacement pumps
V = for variable displacement pumps (load-sensing)
H = venting valve

Supply voltage:
 - = 24 VDC
12 = 12 VDC

Options:
AL = with aluminium plate

Number of proportional stations (F)

Number of on-off stations (E)

Load-sensing blocks giving the maximum flexibility to electrohydraulic systems for multiple controls. They are realized with customized multi-station subplates (up to 10 stations max), in cast iron or aluminium, with integral cartridges and Cetop subplate mounting valves.

Characteristics:

- 2...10 stations, each one to drive an actuator; for on-off or proportional control in open or closed loop;
- optional auxiliary hand-lever control;
- for each station the regulation of flow is compensated, i.e. the oil flow to the actuator is independent of load;
- with or without electronic driver integral on the valve;
- interfaceable to fixed and variable displacement pumps;
- modular assembly;
- simplified maintenance;
- power saving;
- reduced weight.

2 GENERAL CHARACTERISTICS

Size	06 (4401-03-02-0-05 or 4401-03-03-0-05)	10 (4401-03-02-0-05 or 4401-03-03-0-05)
Maximum flow [l/min]	60	100
Maximum pressure [bar]	350	315
Number of stations	2 ÷ 10 (max)	
Material	Cast iron Aluminium (for maximum pressure 210 bar)	
Ports (1)	P, A, B = G 1/2" T = G 3/4" M, LS = G 1/4"	P, A, B = G 3/4" T = G 1" M, LS = G 1/4"
Supply voltage [VDC]	12, 24	

(1) On request, different threads and flange attachments for ports P, T

3 CHARACTERISTICS OF INLET STAGE

F	For fixed displacement pump: the block includes a 3-way pressure compensator to regulate the pump pressure to the maximum load
V	For variable displacement pump (load-sensing)
H	Directional valve for venting, on line LS (load-sensing)

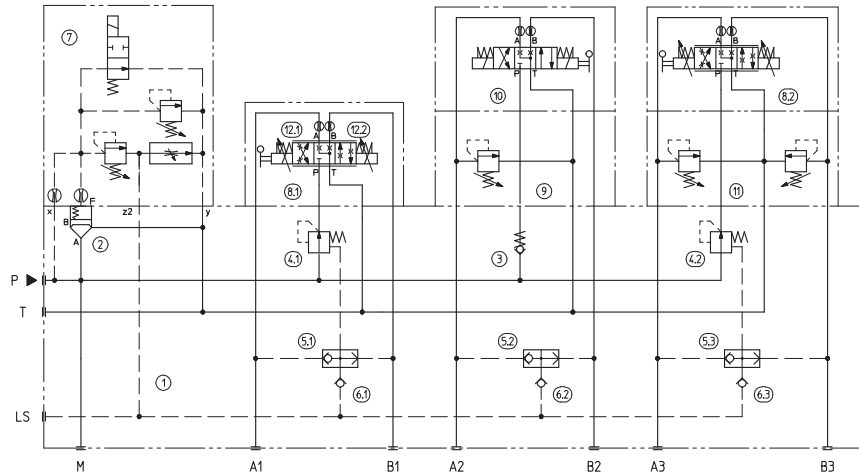
Note: for all the options a protection pressure relief valve is foreseen on port P

4 CHARACTERISTICS OF THE INTERMEDIATE STAGE

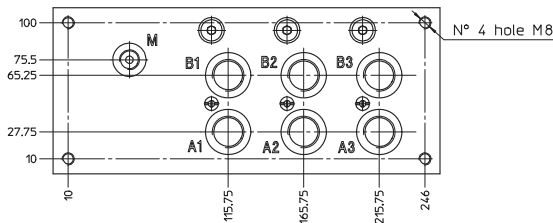
Two-way pressure compensator on port P to regulate the flow of each station independently of the load			
Check valve on port P for not compensated stations			
Piloted check valves to hold the load without over-center valves			
Modular pressure relief valve to limit the pressure on ports A, B			
Modular antishock and anticavitation valve			
Modular directional valve for floating position type HF-0613, see KT catalog, TD030			
ON-OFF		PROPORTIONAL	
Electric operated	see KT catalog tab. E010, E025	Directional control	see KT catalog tab. F160, F165
Lever operated	see KT catalog tab. E150	Electronics (integrated, open loop)	E-MI-AC-01F/7; see KT catalog tab. G010
Manual override	see KT catalog tab. K150		

5 DIMENSIONS [mm]

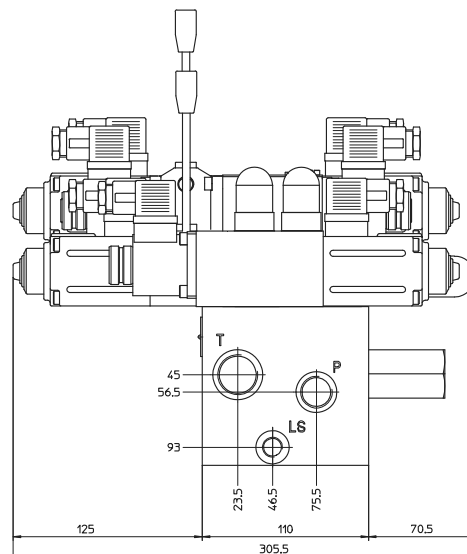
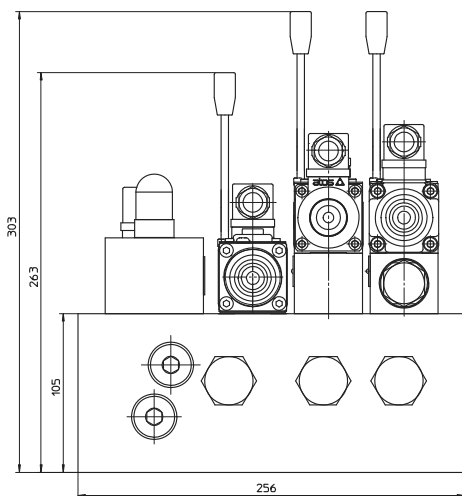
Multiple control type
***** MCH-FH/1E-2Z



Pos	Code	Description	Pos	Code	Description
1	*****-01	Subplate	7	001106 LIMHC-1/***	Pilot pressure relief with venting
2	SC LI-16313	Compensation cartridge	8	DHZO-A-073-***/BMV	Proportional control
3	SP-CART D-20	Check valve on P for not compensated station	9	HMP-013/***	Modular pressure relief valve
4	SP-CART MC-011/15	Two-way compensator	10	DHI-0713/1-***/AMV	On-off control
5	SP-CART B-5	Shuttle valve for load-sensing selection among different ports	11	KM-012/***	Modular pressure relief valve
6	SP-CART D-5	Check valve for load-sensing selection among different ports			

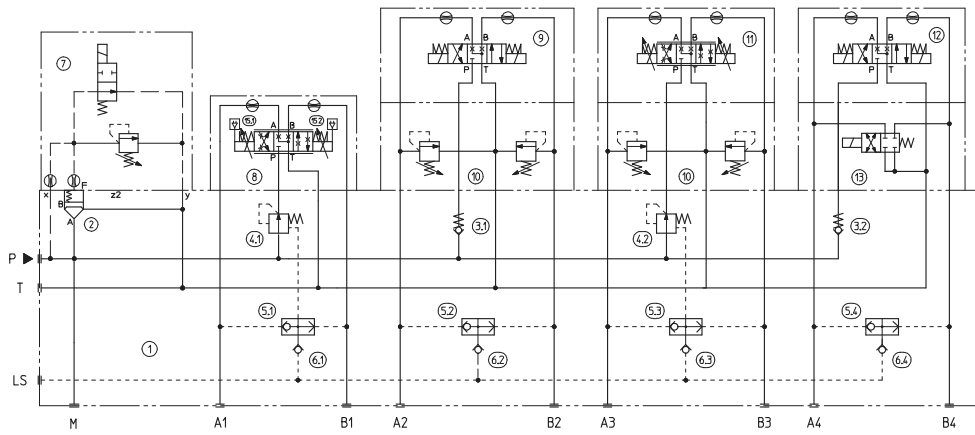


P = from the pump
T = to tank
LS = load sensing
A, B = to actuators
M = manometer port

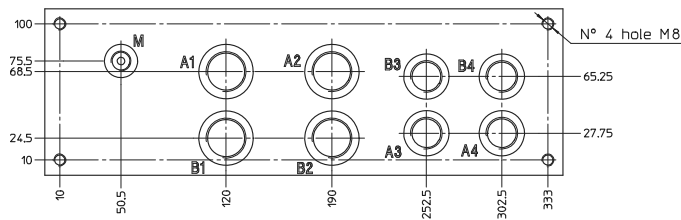


6 DIMENSIONS [mm]

Multiple control type
***** MCK-V/2E-2Z/AL/12



Pos	Code	Description	Pos	Code	Description
1	*****-01	Subplate	8	DKZO-A-173-***	Proportional control
2	SC LI-16313	Compensation cartridge	9	DKE-1713/1-***	On-off control
3	SP-CART D-20	Check valve on P for not compensated station	10	KM-012/***	Modular pressure relief valve
4	SP-CART MC-011/15	Two-way compensator	11	DHZO-A-073-***/ML	Proportional control
5	SP-CART B-5	Shuttle valve for load-sensing selection among different ports	12	DHI-0713/1-***/ML	On-off control
6	SP-CART D-5	Check valve for load-sensing selection among different ports	13	HF-0613-***	On-off modular valve for floating position
7	LIMHC-1/***	Pilot pressure relief	14	E-MI-AC-01F/7	Open loop electronics



P = from the pump
T = to tank
LS = load sensing
A, B = to actuators
M = manometer port

